

MENNONITE CAMPING ASSOCIATION

Natural:🔥:Links

MEMBERSHIP

2020 MCA BI-NATIONAL CONFERENCE

Reminder: Don't forget to renew your camp's MCA membership before the Bi-national gathering at Spruce Lake to receive the MCA member price on your registration. For questions or to renew, contact Olivia at olivia.bartel@campmennoscah.org.

MCA BI-NATIONAL CONFERENCE :: March 23-26, 2020 at Spruce Lake Retreat Canadensis, Pennsylvania

The conference will include opportunities for professional and personal growth, as well as time to nurture relationships among your team members while relaxing in the Pocono Mountains. Come and learn, play and fellowship together as we celebrate sharing the good news of Jesus for 100 years. [REGISTER BY CLICKING HERE.](#)

Travel Subsidy & Info: We want as many member individuals and camps as possible to have the opportunity to participate in MCA events. We believe this experience is a valuable time of building relationships within the Mennonite camping community and have designated a travel subsidy for those who must travel a greater distance to attend MCA gatherings. Camps are encouraged to apply for the MCA travel subsidy if they need help to attend.

Details about the subsidy can be found on the MCA website www.mennonitecamping.org on the Member Benefits page. Camps can apply for a subsidy by contacting Olivia Bartel, olivia.bartel@campmennoscah.org or 620-297-3290.

Nearby airports: Lehigh Valley International Airport (ABE), 1 hour away; Wilkes-Barre Scranton International Airport (AVP), 1 hour away; Newark Liberty International Airport (EWR), 2 hours away. *All times approximate.*

FACEBOOK

Join the conversation! "Like" us on Facebook and be part of the community online: "Mennonite Camping Association - MCA" group.

GATHERING PLACE

The Gathering Place is an interactive website for Anabaptist youth leaders to find connection, resourcing, networking, mentoring, and spiritual formation. Visit www.thegatheringplace.us for info on upcoming FREE webinars especially designed for faith formation leaders.

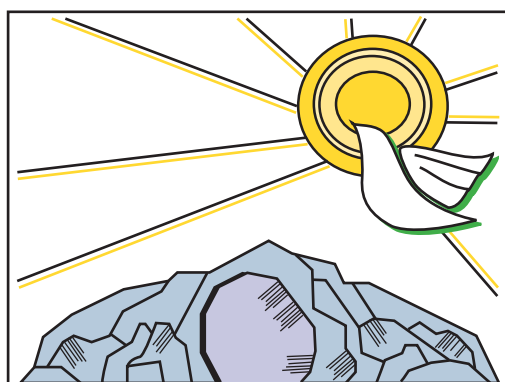
DEEP FAITH

Unable to attend the [Deep Faith conference](#) at [Anabaptist Mennonite Biblical Seminary \(AMBS\)](#) March 2-5, 2020?

Did you know that you can listen to recordings of plenary sessions from previous Pastors and Leaders gatherings in 2018 and 2019? Follow this link to listen <https://soundcloud.com/followambs/sets/pastors-leaders>

LENT AT HOME

Lent at Home 2020 Worship Guide



SHOW US

LENT AT HOME 2020 WORSHIP GUIDE



During the season of Lent, God's children reflect on the life and death of Christ. This year, we are invited to prepare by asking God to show us how to find our hidden God as well as our own safe hiding place, how to remember God's faithful, loving presence, how to reconnect with the Rock of our salvation, how to really see. As we do so, our Lenten journey will help us remember God's power over death and help us learn how to balance joy and sorrow from Jesus on the hard but worthwhile path to resurrection.

This resource for the home is adapted from the congregational worship resources for Lent, printed in *Leader* magazine published by MennoMedia.

Use this At Home worship guide whenever and however it fits into your home's routines and life stage realities. If your family has younger children, feel free to simplify, shorten and paraphrase the prayers and pondering thoughts. To use this booklet for daily worship times, repeat the litany for each day of the week and read the daily scripture recommendations which have been divided into seven short readings.

Written by Elsie Rempel

Available for download at <https://www.commonword.ca/ResourceView/76/21991>